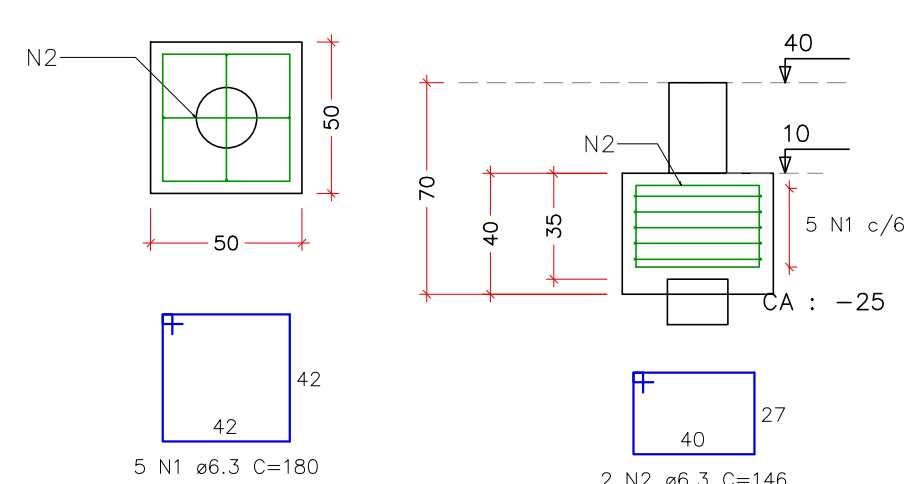


PROJETO ESTRUTURAL – REFORMA E AMPLIAÇÃO DA QUADRA SOCIETY DO BAIRRO CHAPADÃO I
ESCALA INDICADA

B1=B2=B3=B4=B5=B6

1xC20
PLANTA
ESCALA 1:25



RELAÇÃO DO AÇO					
ELEMENTO	AÇO	N	DIAM (mm)	QUANT	C.TOTAL (cm)
6x32	CA50	1	6.3	30	5400
	CA50	2	6.3	12	1752

RESUMO DO AÇO

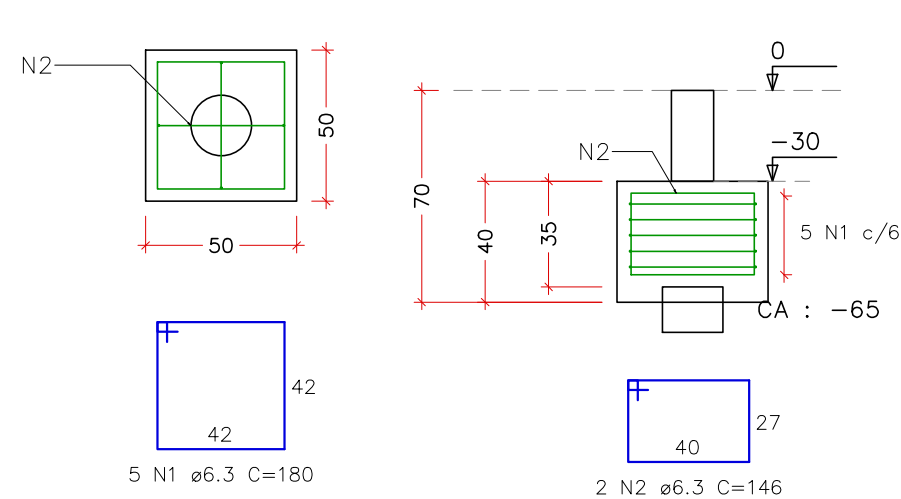
AÇO	DIAM (mm)	C.TOTAL (m)	PESO + 10% (kg)
CA50	6.3	71.5	19.3

PESO TOTAL (kg)
CA50 19.3

Volume de concreto (C-30) = 0.59 m³
Área de forma = 4.80 m²

B7=B8=B9=B10=B11=B12=B13=B14
=B15=B16=B17=B18=B19=B20=B21
=B22=B23=B24=B25=B26=B27=B28
=B29=B30=B31=B32

1xC20
PLANTA
ESCALA 1:25



RELAÇÃO DO AÇO					
ELEMENTO	AÇO	N	DIAM (mm)	QUANT	C.TOTAL (cm)
26x32	CA50	1	6.3	130	23400
	CA50	2	6.3	52	7592

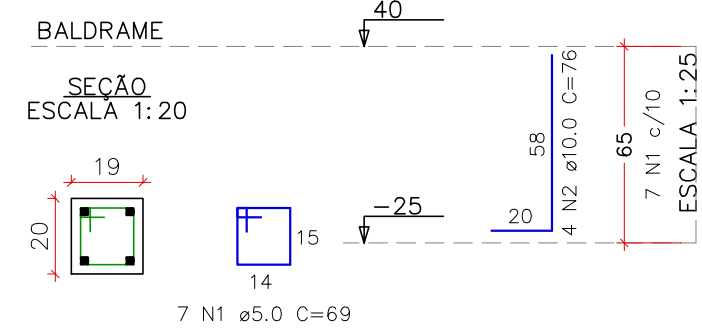
RESUMO DO AÇO

AÇO	DIAM (mm)	C.TOTAL (m)	PESO + 10% (kg)
CA50	6.3	309.9	83.4

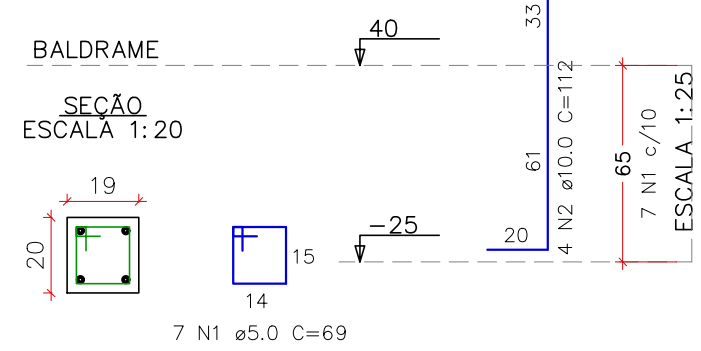
PESO TOTAL (kg)
CA50 83.4

Volume de concreto (C-30) = 2.56 m³
Área de forma = 20.80 m²

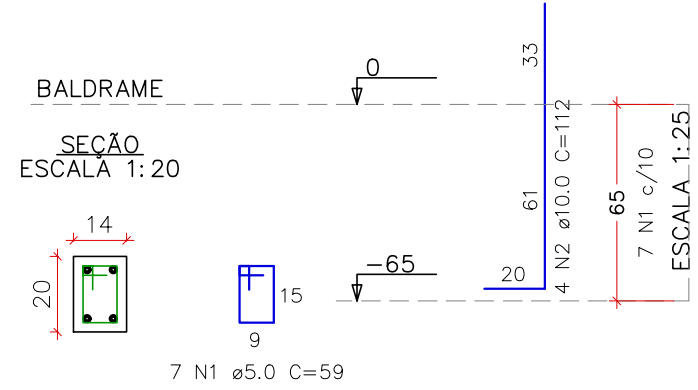
P2=P3=P5=P6



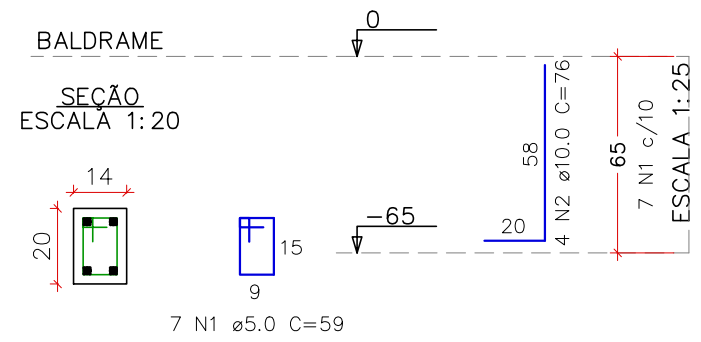
P1=P4



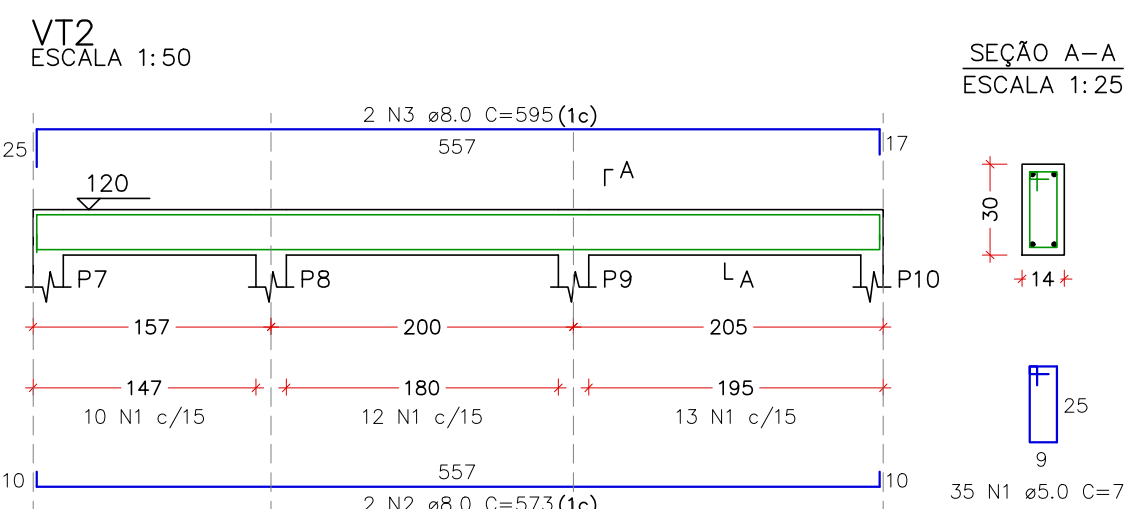
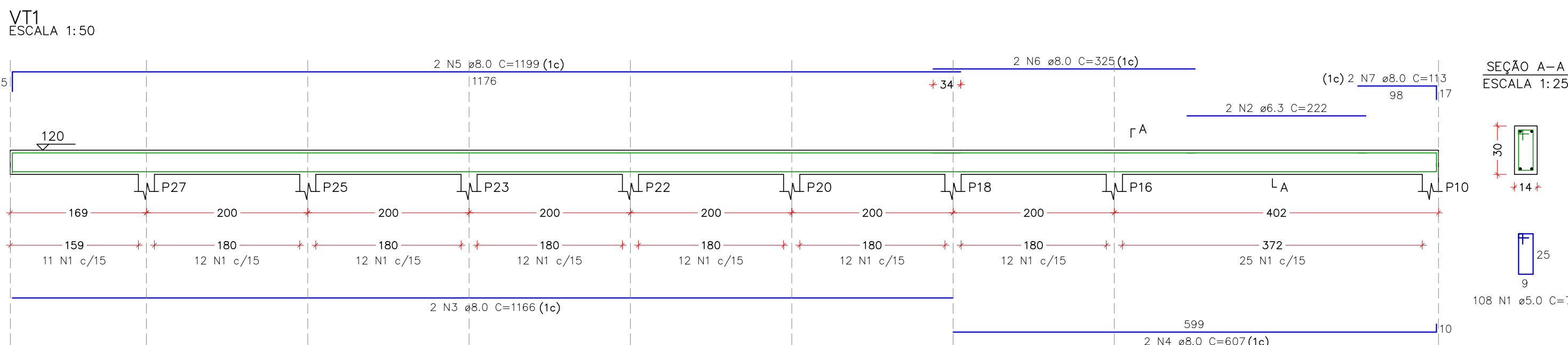
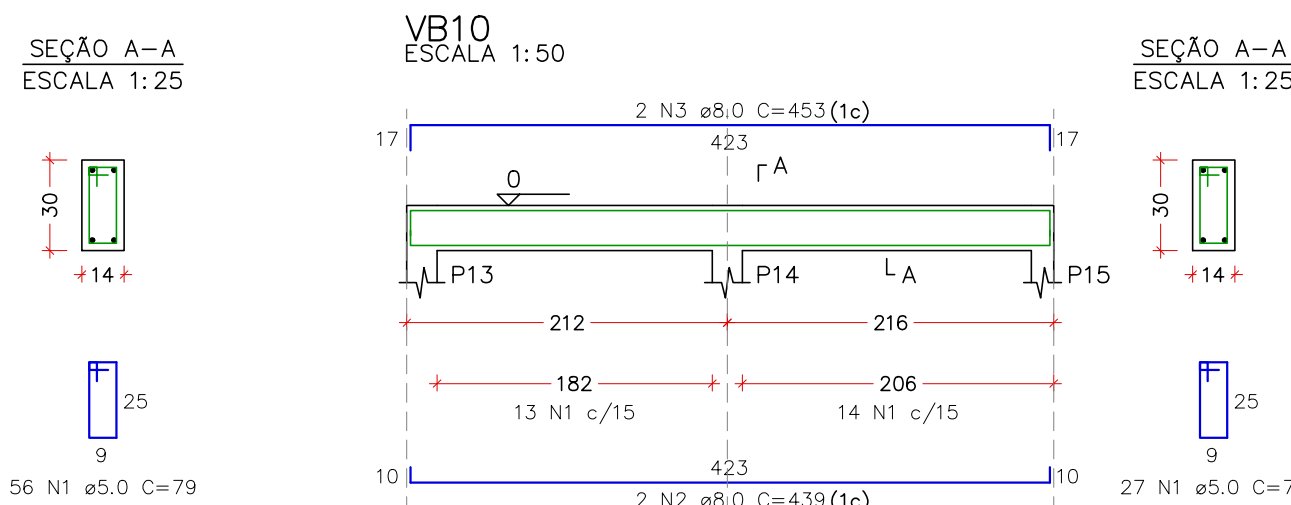
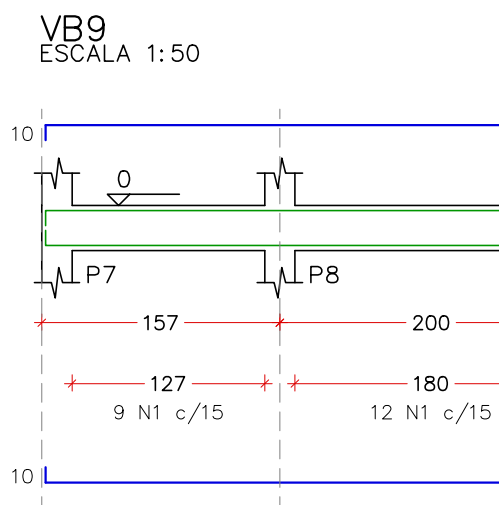
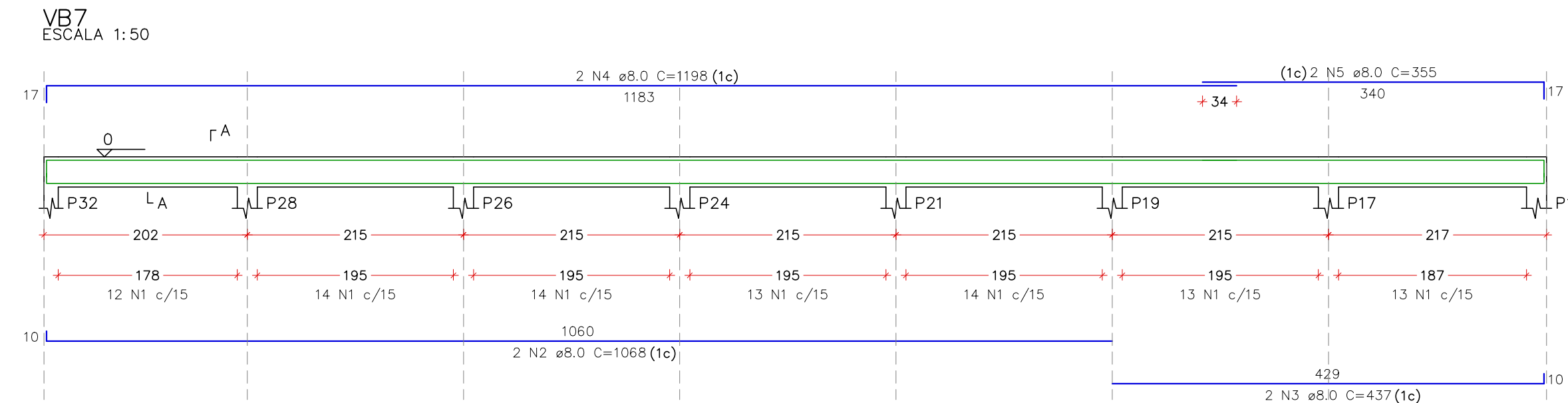
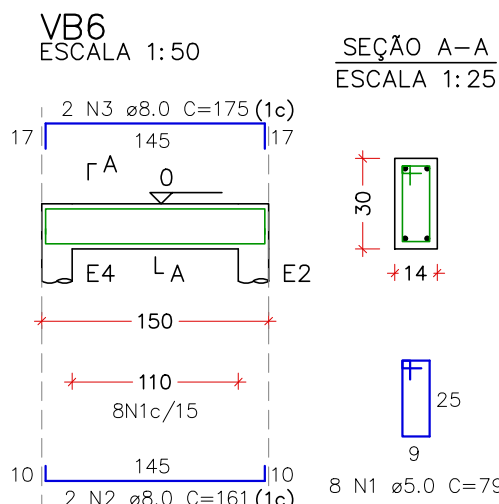
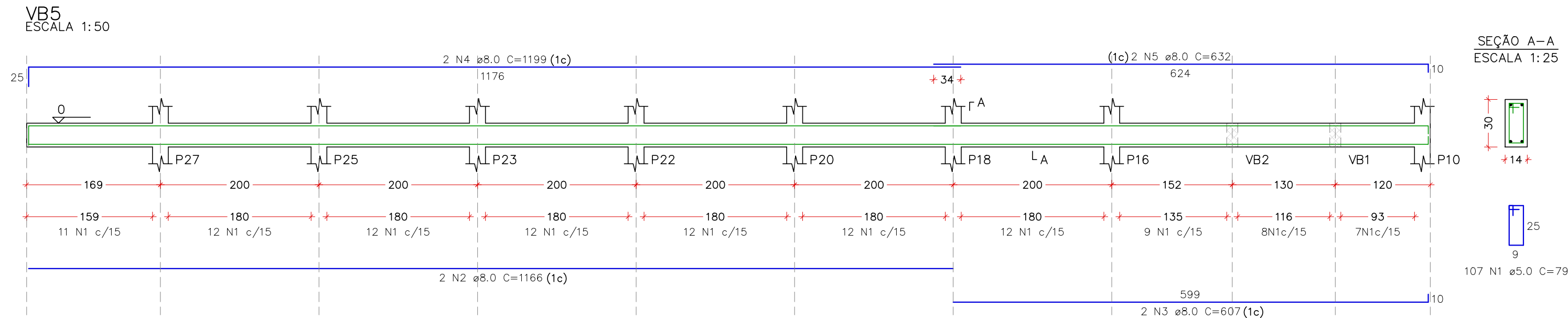
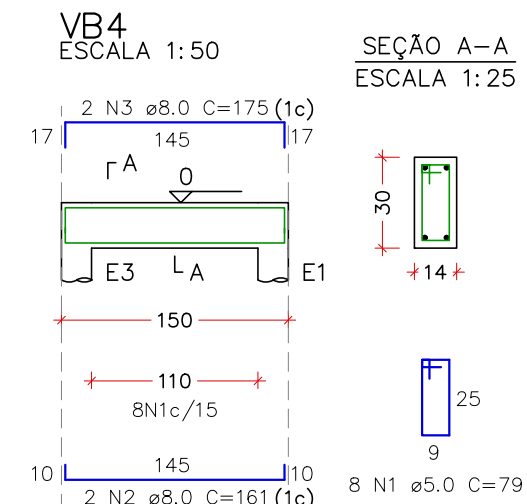
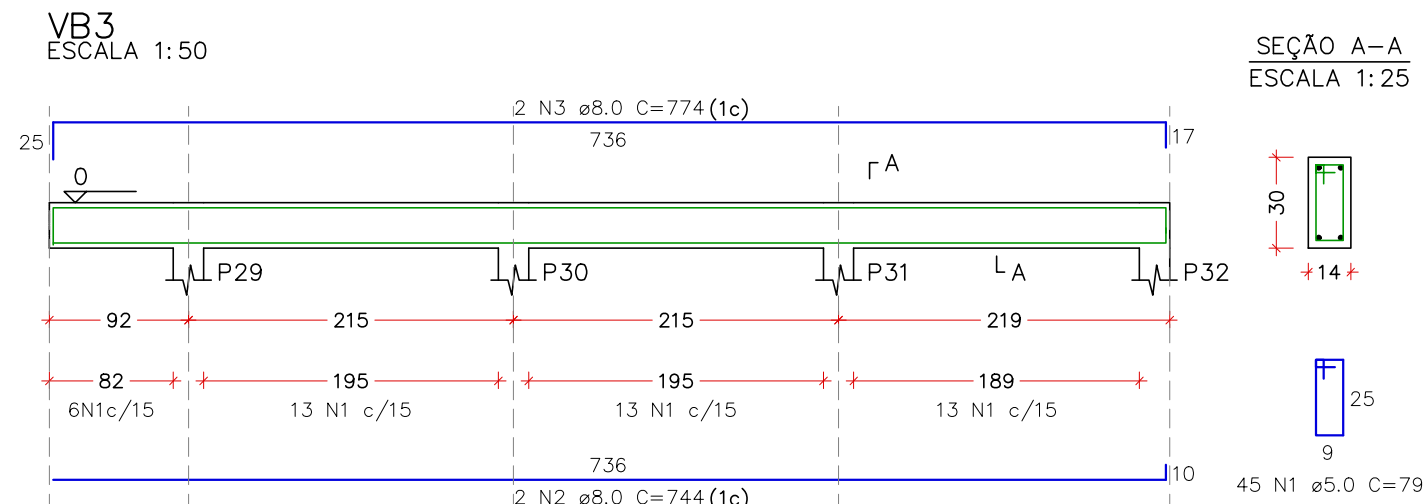
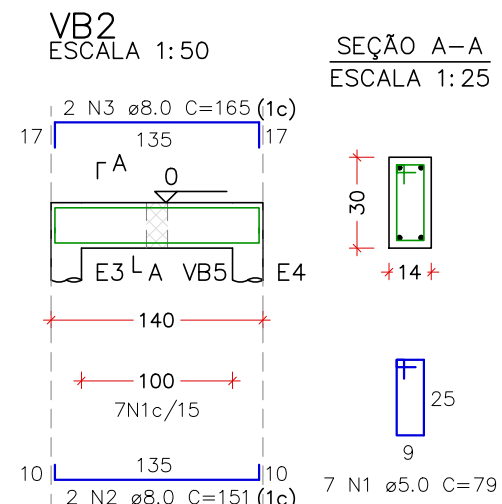
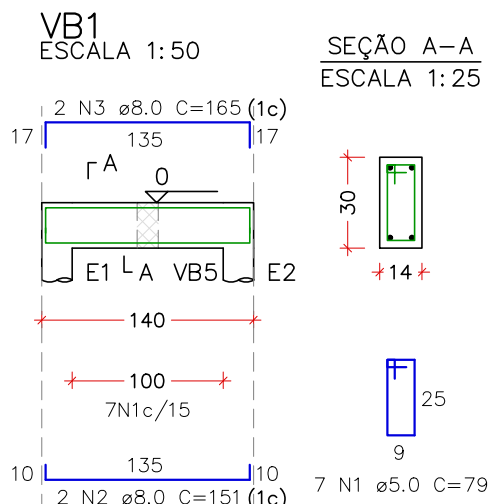
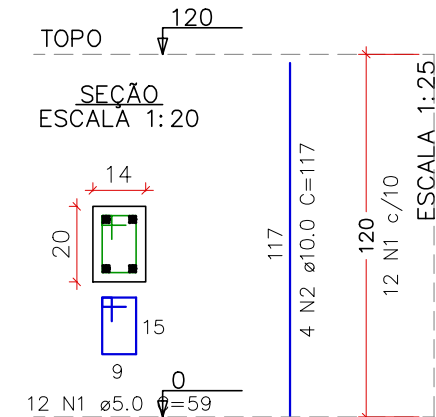
P7=P8=P9=P10=P16=P18=
=P20=P22=P23=P25=P27



P11=P12=P13=P14=P15=P17=
=P19=P21=P24=P26=P28=
=P29=P30=P31=P32



P7=P8=P9=P10=
=P16=P18=P20=
=P22=P23=P25=
=P27



RELAÇÃO DO AÇO – VIGAS TOPO

ELEMENTO	AÇO	N	DIAM (mm)	QUANT	C.UNIT (cm)	C.TOTAL (cm)
VT1	CA60	1	5.0	108	79	8532
	CA50	2	6.3	222	144	444
	CA50	3	8.0	2	1166	2332
	CA50	4	8.0	2	607	1214
VT2	CA50	5	8.0	2	1199	2398
	CA50	6	8.0	2	325	650
	CA50	7	8.0	2	113	226
	CA60	1	5.0	35	79	2765
CA50	2	8.0	2	573	1146	
	CA50	3	8.0	2	595	1190

RESUMO DO AÇO

AÇO	DIAM (mm)	C.TOTAL (m)	PESO + 10% (kg)
CA50	6.3	4.4	1.2
CA50	8.0	91.6	39.7
CA60	5.0	113	19.2

PESO TOTAL (kg)
CA50 40.9
CA60 19.2

Volume de concreto (C-30) = 0.89 m³
Área de forma = 15.62 m²

RELAÇÃO DO AÇO – PILARES BALDRAME						
ELEMENTO	AÇO	N	DIAM (mm)	QUANT	C.UNIT (cm)	C.TOTAL (cm)
4xP2	CA60	1	5.0	28	69	1932
	CA50	2	10.0	16	76	1216
2xP4	CA60	1	5.0	14	69	966
	CA50	2	10.0	8	112	896
11xP7	CA60	1	5.0	77	59	4543
	CA50	2	10.0	44	112	4928
15xP11	CA60	1	5.0	105	99	6165
	CA50	2	10.0	60	76	4560

RESUMO DO AÇO

AÇO	DIAM (mm)	C.TOTAL (m)	PESO + 10% (kg)
CA50	10.0	116	78.7
CA60	5.0	136.4	23.1

PESO TOTAL (kg)
CA50 78.7
CA60 23.1

Volume de concreto (C-30) = 0.29 m³
Área de forma = 6.71 m²

RELAÇÃO DO AÇO – PILARES TOPO						
ELEMENTO	AÇO	N	DIAM (mm)	QUANT	C.UNIT (cm)	C.TOTAL (cm)
P1	CA60	1	5.0	10	69	690
	CA50	2	10.0	4	97	388
P4	CA60	1	5.0	6	69	414
	CA50	2	10.0	4	57	228
11xP7	CA60	1	5.0	132	99	7788
	CA50	2	10.0	44	117	5148

RESUMO DO AÇO

AÇO	DIAM (mm)	C.TOTAL (m)	PESO + 10% (kg)
CA50	10.0	57.6	39.1
CA60	5.0	88.9	15.1

PESO TOTAL (kg)
CA50 39.1
CA60 15.1

Volume de concreto (C-30) = 0.43 m³
Área de forma = 10.22 m²

RELAÇÃO DO AÇO – VIGAS BALDRAME

ELEMENTO	AÇO	N	DIAM (mm)	QUANT	C.UNIT (cm)	C.TOTAL (cm)
VB1	CA60	1	5.0	79	553	
	CA50	2	8.0	2	151	302
VB2	CA50	3	8.0	2	165	330
	CA60	1	5.0	7	79	553
VB3	CA50	2	8.0	2	151	302
	CA50	3	8.0	2	165	330
VB4	CA60	1	5.0	45	79	3555
	CA50	2	8.0	2	744	1488
VB5	CA50	3	8.0	2	774	1548
	CA60	1	5.0	8	79	632
VB6	CA50	2	8.0	2	161	322
	CA50	3	8.0	2	175	350
VB7	CA60	1	5.0	107	79	8453
	CA50	2	8.0	2	1166	2332
VB8	CA50	3	8.0	2	607	1214
	CA50	4	8.0	2	1199	2398
VB9	CA50	5	8.0	2	632	1264
	CA60	1	5.0	8	79	632
VB10	CA50	2	8.0	2	161	322
	CA50	3	8.0	2	175	350
VB11	CA60	1	5.0	93	79	7347
	CA50	2	8.0	2	1068	2136
VB12	CA50	3	8.0	2	437	874
	CA50	4	8.0	2	1198	2398
VB13	CA50	5	8.0	2	355	710
	CA60	1	5.0	64	89	5696
VB14	CA50	2	8.0	2	1022	2044
	CA50	3	8.0	2	1050	2100
VB15	CA60	1	5.0	56	79	4424
	CA50	2	8.0	2	897	1794
VB16	CA50	3	8.0	2	912	1824
	CA60	1	5.0	27	79	2133
VB17	CA50	2	8.0	2	439	878
	CA50	3	8.0	2	453	906

RESUMO DO AÇO

AÇO	DIAM (mm)	C.TOTAL (m)	PESO + 10% (kg)
CA50	8.0	265.1	123.8
CA60	5.0	339.8	57.6

PESO TOTAL (kg)
CA50 123.8
CA60 57.6

Volume de concreto (C-30) = 2.70 m³
Área de forma = 45.71 m²

REV. 00 01/08/25 EMISSÃO INICIAL	DAC
REVISÃO DATA : DESCRIÇÃO:	RESP.:
CLIENTE	
 Prefeitura Municipal de Pouso Alegre	
PROJETO	COORDENAÇÃO
 Rua Cel. Joaquim Francisco, 341, Bairro Varginha CEP- 37501-052 - Itajubá / MG Tel: (35) 2143 - 9087 www.dacengenharia.com.br	RAFAEL BARBOSA CARREIRA CAU: 004155411-5 RESPONSÁVEL TÉCNICO E AUTOR
EMPENHAMENTO	ALÓISIO CAETANO FERREIRA CREA: MG-97.132/D
REFORMA E AMPLIAÇÃO DA QUADRA SOCIETY DO BAIRRO CHAPADÃO I	
ENDEREÇO	DISCIPLINA
AVENIDA NÉLIO GOMES, 311 BAIRRO CONJUNTO CHAPADÃO I, POUSO ALEGRE – MG	ESTRUTURAL
ASSUNTO	FASE DO PROJETO
PROJETO ESTRUTURAL EM CONCRETO ARMADO DETALHAMENTO DOS BLOCOS, PILARES E VIGAS	EXECUTIVO
DATA INICIAL	FOLHA Nº.
01/08/2025	03/03
INDICADA	ROO
REVISÃO	DAC--PMPA--ROC--PE--EST--R00.DWG